

Rex Gooding



47 Stowe Avenue, West Bridgford, NG2 7HQ

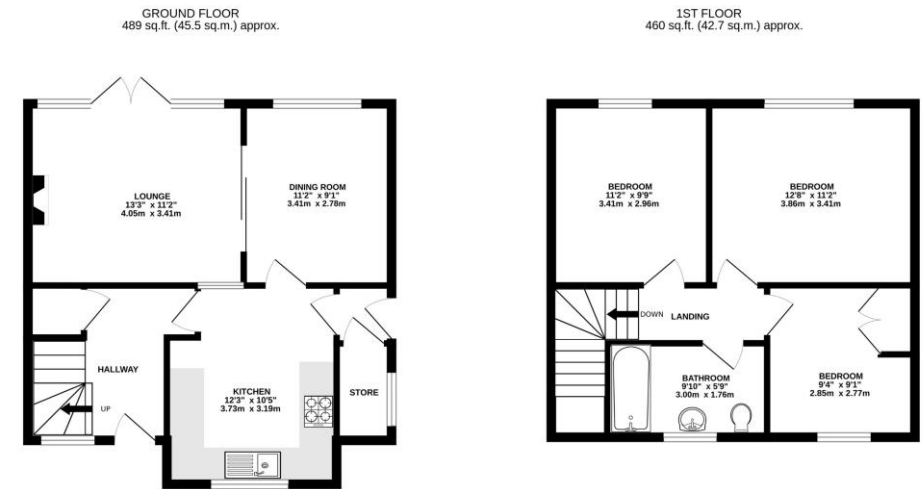
Guide Price: £350,000

47 Stowe Avenue, West Bridgford, NG2 7HQ

A deceptively spacious three bedroom semi-detached home on a generous plot with driveway parking to the front and side and good size rear garden. Located in popular West Bridgford and within excellent local school catchment the house enjoys a lovely rear aspect with the rear garden adjoining green space. In brief the accommodation consists of entrance hall, living room with French doors onto the garden, slide dividing doors onto a dining room, recently fitted modern kitchen and side door access to a useful store/utility cupboard. Upstairs there are three bedrooms and a modern bathroom. Modern gas central heating and double glazing.

Accommodation & Amenities

- Deceptively Spacious Three Bedroom Semi-Detached Home
- Two Reception Rooms & Modern Kitchen
- Three Bedrooms & Modern Bathroom
- Driveway Parking to the Front & Side
- Good Size Plot with Large Rear Garden
- Lovely Rear Aspect
- Modern Gas Central Heating & Double Glazing
- Greythorn Primary & The West Bridgford School Catchment



TOTAL FLOOR AREA: 949 sq.ft. (88.2 sq.m.) approx.
Whilst every attempt has been made to ensure the accuracy of the floorplan contained here, measurements of doors, windows, rooms and any other items are approximate and no responsibility is taken for any error, omission or mis-statement. This plan is for illustrative purposes only and should be used as such by any prospective purchaser. The services, systems and appliances shown have not been tested and no guarantee as to their operability or efficiency can be given.
Made with Metropix C2024



